

DISPLAYS | area  
by EXHIBITS

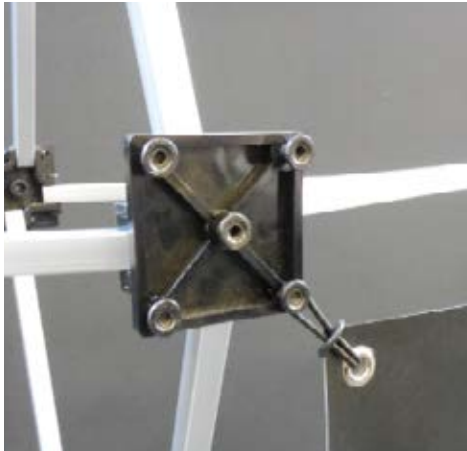
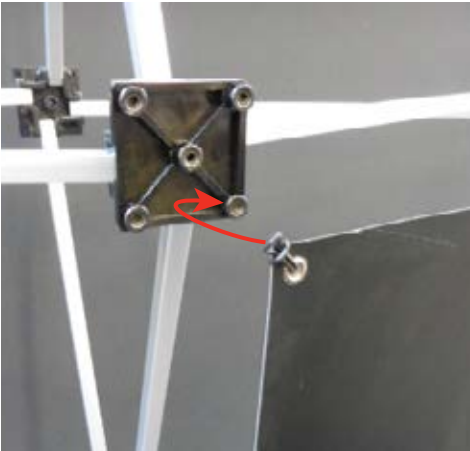
1. Expand the aluminum frame.



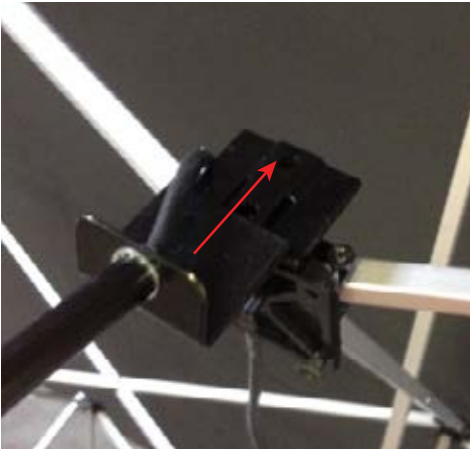
2. Lower and secure the locking bars.



3. Attach rubber rings to graphics (as shown). Hook rings around metal pins.



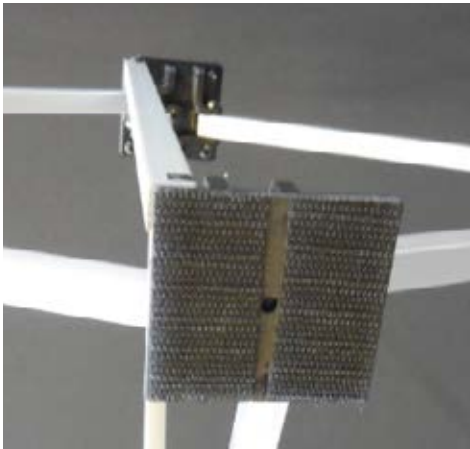
4. Attach lights by sliding the sections together.



5. Place optional shelf on frame.



6. Secure fabric backer to Velcro tabs on frame.



7. Place optional Lycra graphic on case.





DISPLAYS | area  
by EXHIBITS

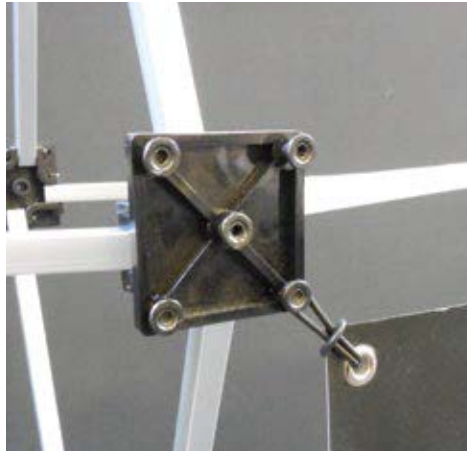
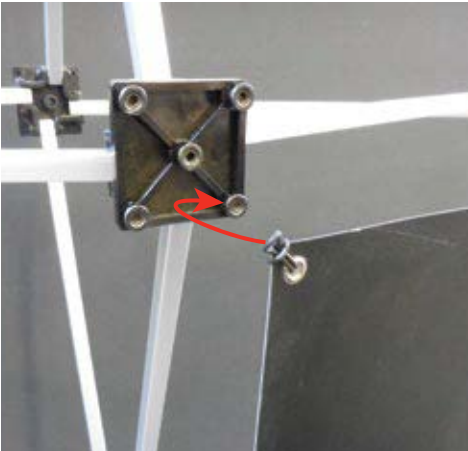
1. Expand the aluminum frame.



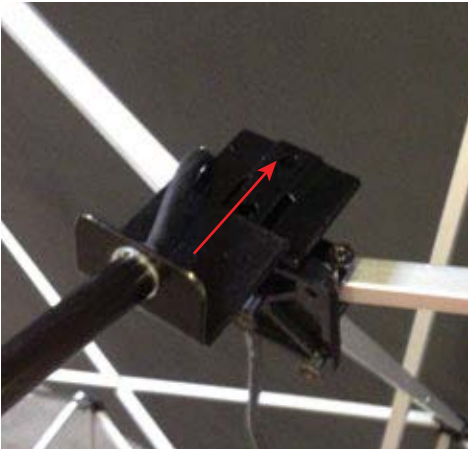
2. Lower and secure the locking bars.



3. Attach rubber rings to graphics (as shown). Hook rings around metal pins.



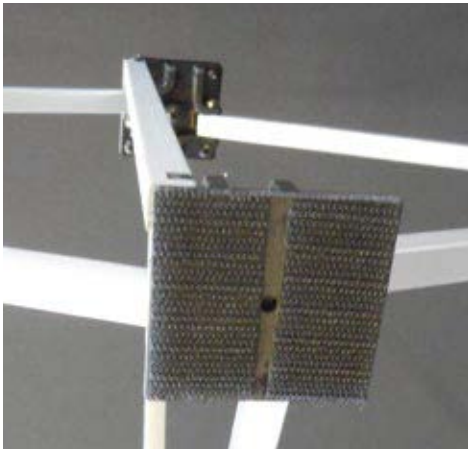
4. Attach lights by sliding the sections together.



5. Place optional shelf on frame.



6. Secure fabric backer to Velcro tabs on frame.



7. Place optional Lycra graphic on case.

